

Study Protocol (at 10 sites)

Week	Activity
-9	First formal contact
-5	Start-Up Meeting
-2	Resident recruitment
-1	Resident recruitment, Audit and Assessment training
1	Audit 1, Assessments 1, Food Service Surveys 1
2	Audit 1, Assessments 1
3	Staff Interviews/Focus group 1, Resident focus group 1
4	Intervention Activation, Meal time observations
5-11	Active Intervention
12-14	Intervention maintenance
15-16	Intervention maintenance, Assessments 2
18-25	Intervention maintenance
26-28	Assessments 3, Audit 2, Staff Interviews/Focus groups 2, Food Service Surveys 1
29-32	Intervention maintenance

7

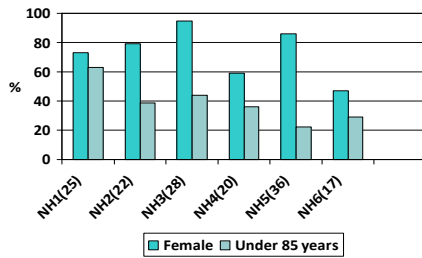
Resident Evaluation Measures

For up to 50 residents per facility:

- Malnutrition Screening Tool
- PGSGA
- Anthropometry (MAC, BMI, calf circ)
- Lean body mass (Bioelectrical Impedance)
- Grip Strength
- Record audit (RCS/ACFI, medications, nutrition care)

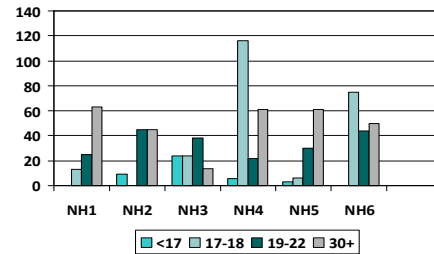
8

Participants-Nursing Homes



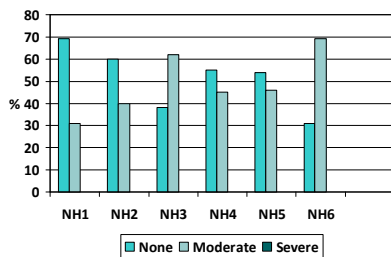
9

BMI-Body Mass Index



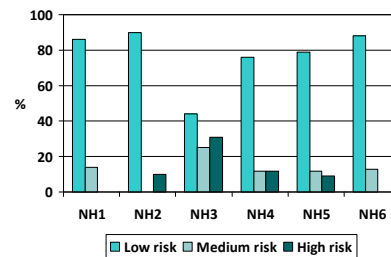
10

MST-Malnutrition Screening Tool



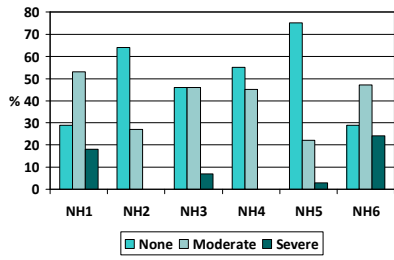
11

MUST-Malnutrition Universal Screening Tool



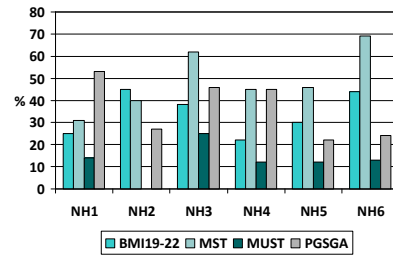
12

PGSGA-Patient Generated Subjective Global Assessment



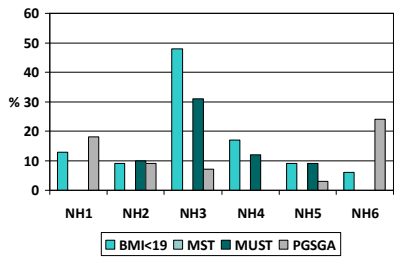
13

Measures Compared-Moderate



14

Measures Compared-Severe



15

Resident Nutrition Status

	MST	MUST	PGSGA
MST	1		
MUST	0.52	1	
PGSGA	0.56	0.67	1

16

Resident Nutrition Status

- Varied across facilities
- Differences within facilities according to measure
- Very small numbers
- Measures not fully tested in this setting
- Good validation studies needed
- Critical we have a reliable measure of nutrition status in this setting

17