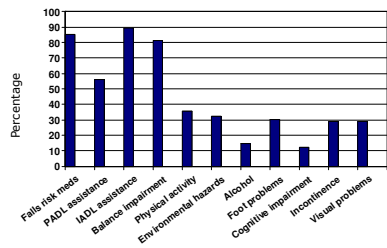
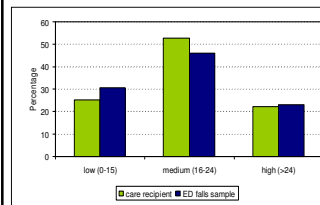




## Most common falls risk factors



## Falls risk for care recipients



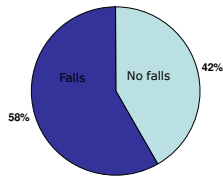
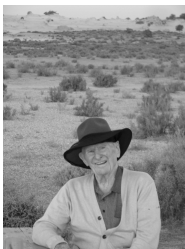
### CURRENT STUDY

Average score is 20

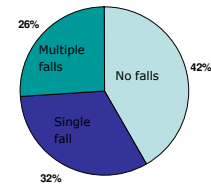
Range is 8-40

Maximum score is 63

## Falls among care recipients



## Falls among care recipients



### Where?

53% indoors  
19% outdoors  
26% community

### How?

35% forward  
33% down  
10.5% right

## •Circumstances

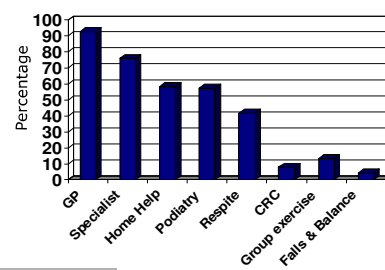
### Why?

30% trip  
28% loss of balance  
10.5% slip  
7% knees gave way

### What?

57% nil injuries  
23% minor, <sup>o</sup>med  
10% minor, medical  
9% severe

## Health service utilisation



## Factors associated with falls risk (FROP-Com): univariate

	P value
Modified Barthel Index	0.000
Lawton Brody IADL	0.000
SF36 Total physical health score	0.003
SF36 reported health transition	0.074
Geriatric Depression Scale	0.031
AQoL	0.000
SF 36 bodily pain	0.161
Number of health problems	0.032
Geriatric Depression Scale (carer)	0.079
Zarit Carer Burden (carer)	0.002



Linear regression: Variables with  $p > 0.2$  excluded (age, gender, SF36 mental health, role emotional, role physical, social functioning, MBI - CG, AQoL - CG and number of health problems - CG)



## Factors associated with falls risk (FROP-Com): multivariate

	P value
Modified Barthel Index	0.000
SF-36 Bodily Pain	0.002
Lawton Brody IADL	0.004
Total number of health problems	0.039



Stepwise linear regression



## Summary

- Falls are frequent events
- Care recipients are at high falls risk
- Falls have moderate impact on function and quality of life for older care recipients and their carers
- In some areas, health service utilisation is low
- There is a need to ensure all modifiable falls risk factors are identified and management plans instituted to minimise risk of future falls and their consequences



## Thank you

### Acknowledgements:

- Australian Government, Department of Health and Ageing
- Ms Cheryl Hines & Ms Kate Wise (Carer's Choice, Ballarat)
- Ms Carmel Morgan (MECWA)
- Ms Olivia Ng (Melbourne City Council)
- Mr Guy Walter (Moonee Valley City Council)
- The carers & care recipients who willingly gave of their time
- The NARI project team

